



## Highly Advanced Sensor & Optics

### UV/IR Flame Detector RFD-2000X

SPECIFICATION	
<b><u>General</u></b>	
<b>Spectral Response</b>	Ultraviolet and Infrared
<b>Detection Range</b>	100ft(30m) for n-Heptane fire
<b>Field of View</b>	Horizontal 90° Vertical 90°
<b>Response Characteristics</b>	Typical 5 seconds
<b>Temperature Range</b>	Operating : -40°C to +75°C. Storage : -50°C to +80°C.
<b>Humidity Range</b>	0 to 95% relative humidity
<b><u>Electrical</u></b>	
<b>Operating Voltage</b>	Typical DC24V (17 to 32).
<b>Power Consumption</b>	1.8W maximum at 32 vdc
<b>Wiring</b>	14AWG(2.08mm <sup>2</sup> ) to 24AWG(0.205mm <sup>2</sup> ) shielded cable recommended.
<b>Electromagnetic Compatibility</b>	EMC Protected
<b><u>OutPut</u></b>	
<b>Relays</b>	<p>Fire Alarm: - Form A or B Selectable - Normally de-energized - Latching/Non-latching. - Contacts rated 2A at 28 vdc.</p> <p>Fault Alarm - From A or B Selectable - Normally Energized - Contacts rated 2A at 28 vdc.</p> <p>Warning Alarm : - From A or B Selectable - Contacts rated 2A at 28 vdc</p>

SPECIFICATION	
<b><u>OutPut</u></b>	
<b>4-20mA</b>	A maximum loop resistance of 500 ohms
	<p>Fault : 0mA +0.5mA Normal : 4mA ±0.5mA IR Detection : 8mA ±0.5mA UV Detection : 12mA ±0.5mA Warning : 16mA ±0.5mA Alarm : 20mA ±0.5mA</p>
<b>RS-485</b>	Proprietary communication
<b><u>Mechanical</u></b>	
<b>Dimensions</b>	W134 x H117x D120 mm W5.3 x H4.6 x D4.7 Inch
<b>Enclosure Material</b>	Stainless steel 316
<b>Shipping Weight</b>	3.4 kg
<b>Color</b>	Metal
<b>Conduit Entry Size</b>	2 x 1/2 NPT, M20X1.5
<b><u>Approvals</u></b>	
<b>Performance</b>	<b>FM 3260</b>
<b>Explosion proof</b>	<b>FM (US)</b> Class I Division 1 Groups B,C and D Class II Division 1 Groups E,F and G Class III <b>ATEX</b> Ex d IIB + H2, T6
<b>Water and dust tight</b>	IP67
<b>Vibration</b>	FM approvals
<b><u>Accessories</u></b>	
<b>Fire Simulator</b>	TL205
<b>Bracket</b>	BK-2



### Highly Advanced Sensor & Optics

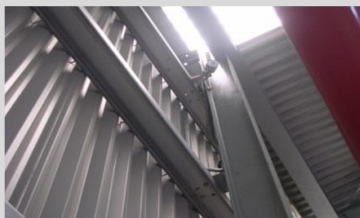
### UV/IR Flame Detector RFD-2000X

#### APPLICATION

##### Oil&Gas Plant

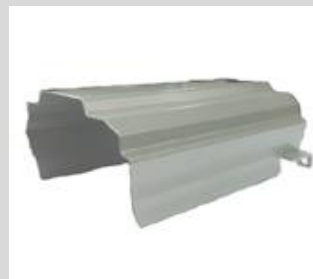


##### General Application



#### APPLICATION

##### Accessories



<Sun shield>



<Test Lamp\_TL-205>



<Air shield>



<Bracket\_BK-2>

##### False Alarm Immunity Tech

